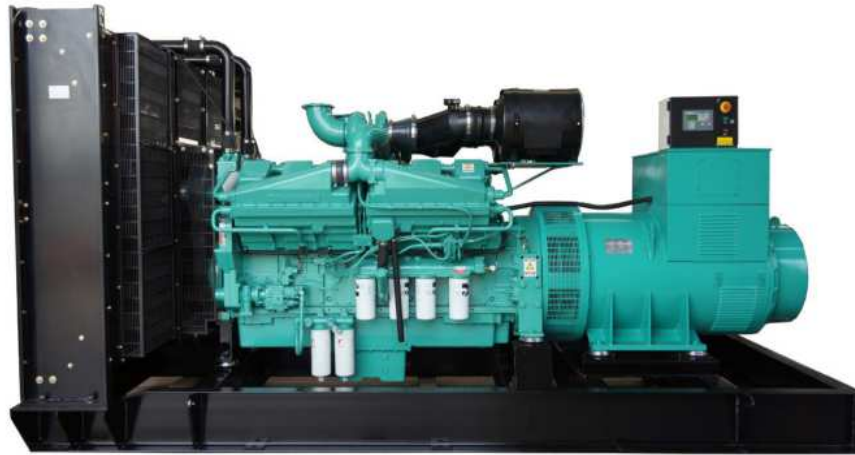




**SPECIFICATIONS OF 700KW CUMMINS DIESEL GENSET**



**Genset Specifications :**

Power :	700kw/875KVA
Rated voltage :	400V/230V
Rated current :	1260A
Rated frequency :	50 HZ
The factor of rated power :	0.8
The regulating rate of instantaneous voltage :	≤±15%
The regulating rate of steady voltage :	≤±0.5%
The waving rate of voltage :	≤0.5%
Voltage waveform distortion degree :	≤5%
The time of steady voltage :	≤1.5sec
The regulating rate of steady frequency :	≤±2%
The regulating rate of instantaneous frequency :	≤±5%
The time of steady frequency :	≤3sec
The waving rate of frequency :	≤±0.5%
The waste of fuel with full load :	199g/kw.h
Open type Size (mm) :	1650*720*1200
Weight(kg) :	
Silent type Size (mm) :	
Weight(kg) :	

**Diesel engine specifications :**

Brand:	CCEC Cummins
Model:	KTA38-G2B
Standby power:	789KW/986.25KVA
Type:	four strokes, waste gas turbine boost,direct spurting type
Cooling way:	water cooling
With type:	V type
Bore*Trip:	159mm*159mm
Cylinder:	12cylinders
Displacement:	38L
Lubricating Capacity:	100L
Speed adjustment way:	electronic speed
Rotating speed:	1500r/min



# Zhengzhou LeiMing Power Equipment Manufacturing Co.,Ltd

## Diesel Generator Sets

Starting way:	starting with electricity
<b>AC Alternator specifications:</b>	
Brand:	Stamford
Model:	LVI 634D
Type:	brushless (AVR automatic voltage regulating)
The connecting way of the phase:	three phases four lines
Insulation degree:	H degree
TIF:	<50
THF:	<2%
The factor of rated power:	≤±1%
Grading Protection:	IP23

## Genset packing list :

Ø Diesel Engine,alternator,control panel
Ø40℃ - 50℃ radiator tank, cover
Ø output MCCB w/control LCD panel
Ø 12V starting battery and connecting cable
Ø 9dBsilencer and connecting swell bellows;
Ø stainless steel base (including: High damping rubber bearing) ;
Øair filter, fuel filter & lube filter;
Østarting motor w/charging generator;
Ø enclosed documents: engine and genset technical document, manual etc.;

## Warranty

12 monthes or working in 1500 hours, whichever occurs earlier
We provide the parts foc, free services and repairs in the warranty period

## Standard:

ISO9001: 2008 CE
GB755,GB2820.5-09;IEC60034;VDE0530



## Control screen

Brand:Smartgen/Deepsea/ComAp
Features:English interface;LED screen;Touch buttons

## Based Function:

- 1.Display loading power,voltage,current,frequency,speed,temperature,oil pressure,running time,etc
- 2.Warning when low or high voltage,low or high frequency,over current,over or low speed,low or over battery voltage,etc
- 3.Over load protection,over/under frequency protection,over/under/imbalance voltage protection and low oil shutdown.

## Optional Accessories

◆Auto startup control panel
◆Automatic control panel(ATS)
◆Split type daily fuel tank;Integrated base fuel tank
◆Rainproof enclosure;Soundproof enclosure
◆Mobile power station
◆Mute power station

## Sales commitment

The products that we provide are all new, each unit all pass the strict production testing. All of our products offer warranty service, the warranty time of Genset is 12 months or accumulative total 1000 operating hours(whichever occurs first) after commissioning acceptance.



Company Overvie







# Zhengzhou LeiMing Power Equipment Manufacturing Co.,Ltd

Diesel Generator Sets







# Zhengzhou LeiMing Power Equipment Manufacturing Co.,Ltd

Diesel Generator Sets







# Zhengzhou LeiMing Power Equipment Manufacturing Co.,Ltd

Diesel Generator Sets







# Zhengzhou LeiMing Power Equipment Manufacturing Co.,Ltd

Diesel Generator Sets

