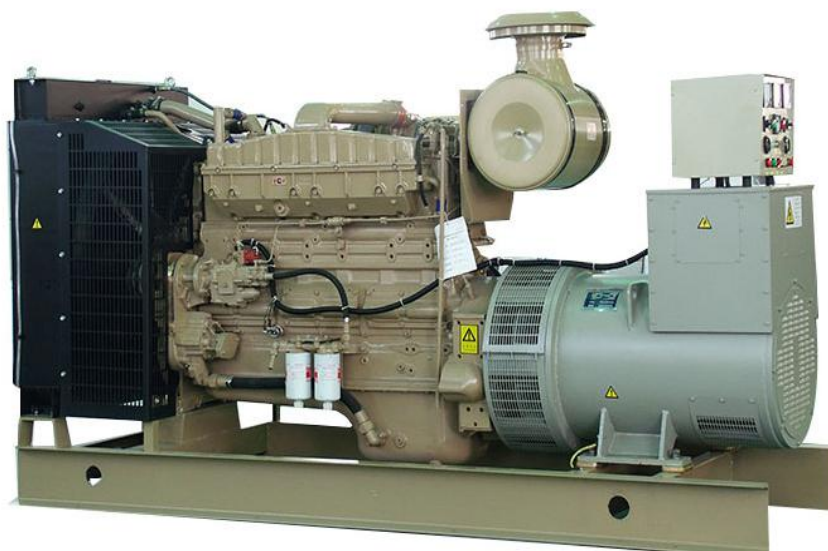




SPECIFICATIONS OF 300KW CUMMINS DIESEL GENSET



Genset Specifications :

Power :	300kw/375KVA
Rated voltage :	400V/230V
Rated current :	504A
Rated frequency :	50 HZ
The factor of rated power :	0.8
The regulating rate of instantaneous voltage :	≤±15%
The regulating rate of steady voltage :	≤±0.5%
The waving rate of voltage: :	≤0.5%
Voltage waveform distortion degree :	≤5%
The time of steady voltage :	≤1.5sec
The regulating rate of steady frequency :	≤±2%
The regulating rate of instantaneous frequency :	≤±5%
The time of steady frequency :	≤3sec
The waving rate of frequency :	≤±0.5%
The waste of fuel with full load :	192.6g/kw.h
Open type Size (mm) :	1650*720*1200
Weight(kg) :	
Silent type Size (mm) :	
Weight(kg) :	

Diesel engine specifications :

Brand:	CCEC Cummins
Model:	NTA855-G2A
Standby power:	343KW/428KVA
Type:	four strokes, waste gas turbine boost,direct spurting type
Cooling way:	water cooling
With type:	Inline type
Bore*Trip:	140mm*152mm
Cylinder:	6cylinders
Displacement:	14L
Lubricating Capacity:	38L
Speed adjustment way:	electronic speed
Rotating speed:	1500r/min
Starting way:	starting with electricity



Zhengzhou LeiMing Power Equipment Manufacturing Co.,Ltd

Diesel Generator Sets

AC Alternator specifications:

Brand:	Stamford
Model:	HCI 444FS
Type:	brushless (AVR automatic voltage regulating)
The connecting way of the phase:	three phases four lines
Insulation degree:	H degree
TIF:	<50
THF:	<2%
The factor of rated power:	≤±1%
Grading Protection:	IP23

Genset packing list :

- Ø Diesel Engine,alternator,control panel
- Ø40℃—50℃ radiator tank, cover
- Ø output MCCB w/control LCD panel
- Ø 12V starting battery and connecting cable
- Ø 9dBsilencer and connecting swell bellows;
- Ø stainless steel base (including: High damping rubber bearing) ;
- Øair filter, fuel filter & lube filter;
- Østarting motor w/charging generator;
- Ø enclosed documents: engine and genset technical document, manual etc.;

Warranty

12 monthes or working in 1500 hours, whichever occurs earlier
 We provide the parts foc, free services and repairs in the warranty period

Standard:

ISO9001: 2008 CE
 GB755,GB2820.5-09;IEC60034;VDE0530



Control screen

Brand:Smartgen/Deepsea/ComAp
 Features:English interface;LED screen;Touch buttons

- Based Function:**
- 1.Display loading power,voltage,current,frequency,speed,temperature,oil pressure,running time,etc
 - 2.Warning when low or high voltage,low or high frequency,over current,over or low speed,low or over battery voltage,etc
 - 3.Over load protection,over/under frequency protection,over/under/imbalance voltage protection and low oil shutdown.

Optional Accessories

- ◆Auto startup control panel
- ◆Automatic control panel(ATS)
- ◆Split type daily fuel tank;Integrated base fuel tank
- ◆Rainproof enclosure;Soundproof enclosure
- ◆Mobile power station
- ◆Mute power station

Sales commitment

The products that we provide are all new, each unit all pass the strict production testing. All of our products offer warranty service, the warranty time of Genset is 12 months or accumulative total 1000 operating hours(whichever occurs first) after commissioning acceptance.



Company Overvie





Zhengzhou LeiMing Power Equipment Manufacturing Co.,Ltd

Diesel Generator Sets





Zhengzhou LeiMing Power Equipment Manufacturing Co.,Ltd

Diesel Generator Sets





Zhengzhou LeiMing Power Equipment Manufacturing Co.,Ltd

Diesel Generator Sets





Zhengzhou LeiMing Power Equipment Manufacturing Co.,Ltd

Diesel Generator Sets

